

Extend or Tailor PTC Creo View Toolkits for Unsurpassed Visual Collaboration

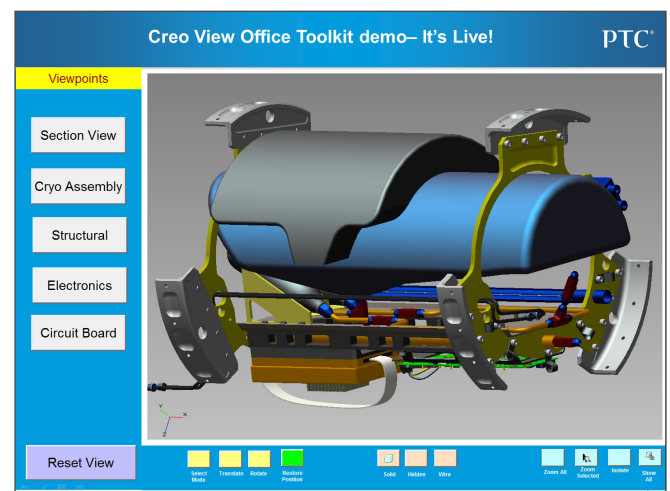
FOR PRODUCT DEVELOPMENT ORGANIZATIONS THAT HAVE UNIQUE COLLABORATION NEEDS, PTC CREO VIEW TOOLKITS PROVIDE A RICH SET OF APIS FOR TO ALLOW REUSE OF PTC CREO VISUALIZATION TECHNOLOGY ACROSS THE ORGANIZATION AND THROUGHOUT THE SUPPLY CHAIN.

PTC Creo View Toolkits provide customers with a rich set of APIs for creating interactive Web portals, tailored Java® applications, and dynamic Microsoft® Office® documents containing embedded viewables. Imagine the insight gained by having applications, such as simple touch screen displays, for navigating 3D models on the shop floor and highly optimized 3D product navigation Web pages to improve communication with the supply chain.

Key Benefits

- Make viewable data accessible to your extended product development team in ways never before attainable
- Gain productivity advantages by using a high-performance architecture and highly compressed files
- Support your unique requirements with flexible development options
- Allow support for a variety of visual collaboration use cases:
 - Infuse high levels of visual interactivity into existing product development applications to support internal team members

- Unlock your visual content throughout your supply chain by providing highly interactive Web pages
- Create stunning Microsoft Office documents containing embedded, interactive 3D data

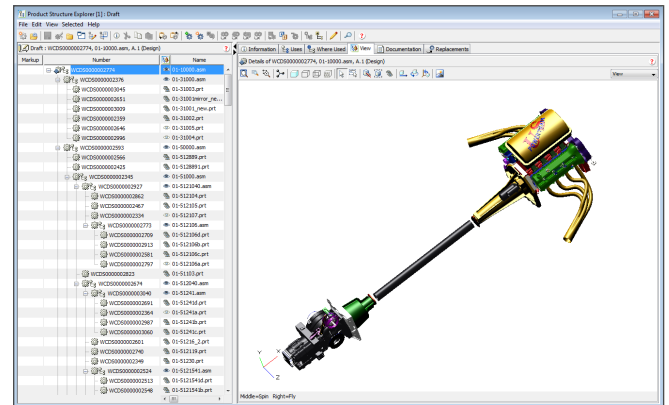


Interactive Web pages built with PTC Creo View Web Toolkit.

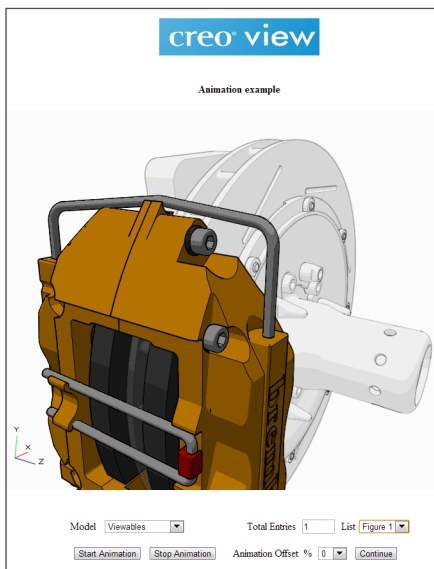
To support a range of usage scenarios, there are three distinct PTC Creo View Toolkit offerings for application developers:

- PTC Creo View Web Toolkit – to embed PTC Creo View technology into Web pages
- PTC Creo View Java Toolkit – to embed PTC Creo View technology into Java applications
- PTC Creo View Office Toolkit – to embed PTC Creo View technology into Microsoft Office documents, such as PowerPoint and MS Word

End users will interact with the developed applications via either PTC Creo View Express, PTC Creo View Lite, or PTC Creo View MCAD. Please contact PTC for specific details.



PTC Creo View technology embedded in Java application using PTC Creo View Java Toolkit.



Creating dynamic PowerPoint presentations with PTC Creo View Office Toolkit.

Features

Superlative Performance and Scalability

- Rapidly load and smoothly interact with large assemblies
- Leverage the ultra-scalable, high-performance architecture of PTC's PTC Creo View
- Embed PTC Creo View technology and reuse existing PTC Creo View viewables across all license types

Standard Programming Languages

- JavaScript (PTC Creo View Web Toolkit)
- Java (PTC Creo View Java Toolkit)

Rich Levels of Interaction and Control

- Embed in HTML pages, Java applications, and Microsoft Office applications
- Enable interaction with 3D models, 2D drawings, documents, images and ECAD, PCB's and schematics
- Enable the instinctive, task-based PTC Creo View user interface within Web pages or custom applications
- Get or set PTC Creo View runtime parameters
- Get or set data parameters
- Capture camera states (Annotation sets)
- Allows annotation set creation, storage and activation
- Java API enables dynamic construction and editing of product structures
- Playback animations built in PTC Creo View MCAD
- Access PMI from 3D Models

Supporting Information

- Electronic user manuals
- Sample code
- Sample data

Platform Requirements and Compatibility

- Microsoft Windows only
- English only

*NOTE: Timing of product releases is subject to change at PTC's discretion.

For the most up-to-date platform support information, please visit: www.ptc.com/partners/hardware/current/support.htm

© 2013, PTC. All rights reserved. Information described herein is furnished for informational use only, is subject to change without notice, and should not be construed as a guarantee, commitment, condition or offer by PTC. PTC, the PTC Logo, PTC Windchill, PTC Windchill PDMLink, and all PTC product names and logos are trademarks or registered trademarks of PTC and/or its subsidiaries in the United States and in other countries. All other product or company names are property of their respective owners. The timing of any product release, including any features or functionality, is subject to change at PTC's discretion.

J2591-Creo-View-Toolkit-DS-0813